

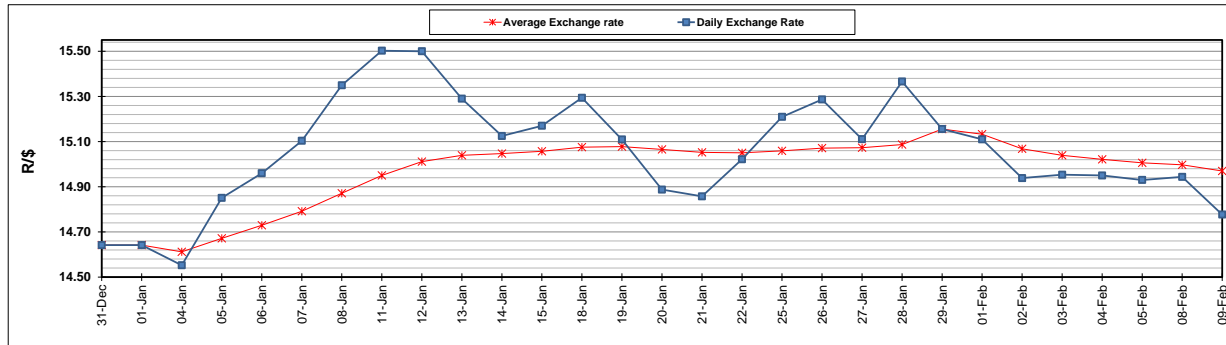
	PETROL 95 ULP	PETROL 93 ULP & LRP	DIESEL 0.05%	DIESEL 0.005%	ILL. PAR.
GAUTENG PUMP PRICE (SA c/l) AS FROM 03/02/2021	1,567.000	1,550.000	-	-	-
WHOLESALE PRICE (SA c/l) AS FROM 03/02/2021	-	-	1,358.420	1,360.820	798.688
SINGLE NATIONAL MAXIMUM RETAIL PRICE	-	-	-	-	1,008.000
BASIC FUEL PRICE - 09/02/2021 (SA c/l)	645.356	636.598	645.665	649.373	625.190
PRESS RELEASE CONTRIBUTION TO BFP 03/02/2021 - 09/02/2021 (SA c/l)	600.170	593.170	599.630	602.030	586.128
UNIT OVER/(UNDER) RECOVERY - 09/02/2021 (SA c/l)	(45.186)	(43.428)	(46.035)	(47.343)	(39.062)
AVERAGE BASIC FUEL PRICE 29/01/2021 - 09/02/2021	631.647	623.269	623.346	627.096	605.206
AVERAGE UNIT OVER/(UNDER) RECOVERY 29/01/2021 - 09/02/2021	(61.852)	(60.474)	(45.466)	(47.191)	(41.203)

ANALYSIS MOVEMENT OF AVERAGE OVER/(UNDER) RECOVERY

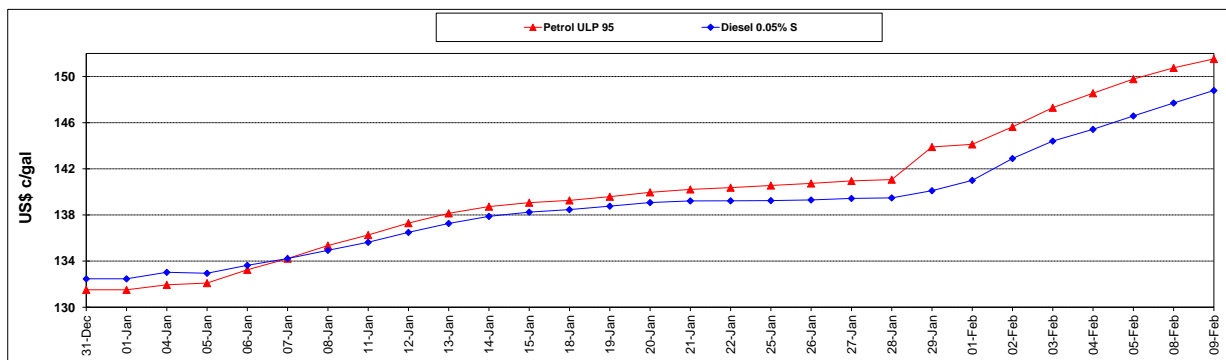
	PETROL 95	PETROL 93	DIESEL 0.05%	DIESEL 0.005%	ILL. PAR.
- MOVEMENT IN INTERNATIONAL PRODUCT PRICES	(66.806)	(65.362)	(50.355)	(52.109)	(45.949)
- MOVEMENT IN EXCHANGE RATE	4.954	4.888	4.889	4.918	4.746
AVERAGE UNIT OVER/(UNDER) RECOVERY 29/01/2021 - 09/02/2021	(61.852)	(60.474)	(45.466)	(47.191)	(41.203)

R/\$ EXCHANGE RATE - (R/\$14.7770 - 09/02/2021)

EXCHANGE RATE USED IN BASIC FUEL PRICE



INTERNATIONAL PRODUCT PRICES OF BASKET USED IN BASIC FUEL PRICE



BASIC FUEL PRICE IN SA CENTS PER LITRE

